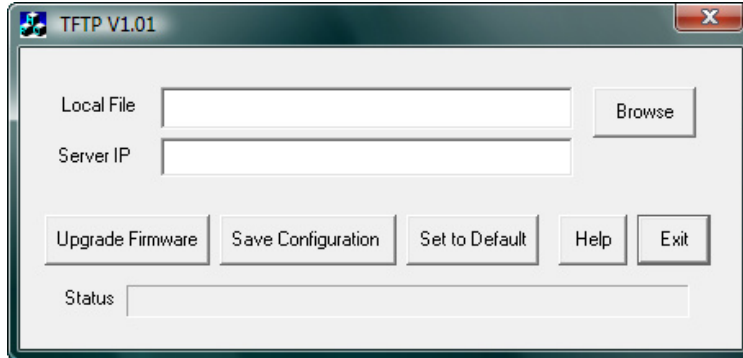


TFTP Instructions

1. Power on your Syswan Load Balancer.
2. Use the supplied Windows TFTP utility or a TFTP client program to apply new firmware or a saved configuration. If using the supplied Windows TFTP program, the software screen will look like the following example :



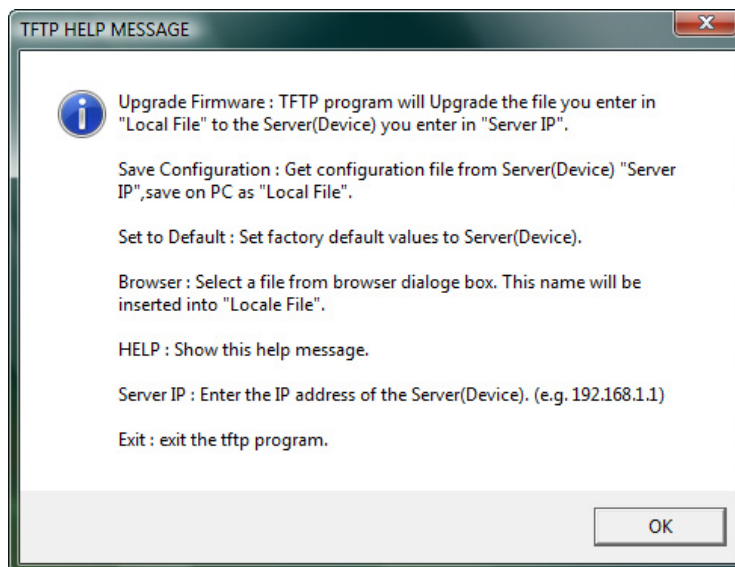
TFTP utility

- Enter the name of the firmware upgrade file on your PC, or click the "Browse" button to locate the file.
 - Enter the LAN IP address of Syswan Load Balancer in the "Server IP" field (ie: 192.168.1.1).
 - Click "Upgrade Firmware" to send the firmware file to the Syswan Load Balancer.
3. When the downloading is done your Syswan Load Balancer will reboot and should work normally.

Note:

The supplied Windows TFTP utility also allows you to perform other operations:

- Save the current configuration settings to your PC (use the "Save Configuration" button).
- Restore a previously-saved configuration file to the Syswan Load Balancer (use the "Upgrade Firmware" button).
- Set the Syswan Load Balancer to its default values (use the "Set to Default" button).



TFTP utility help screen